

Pro-Energy

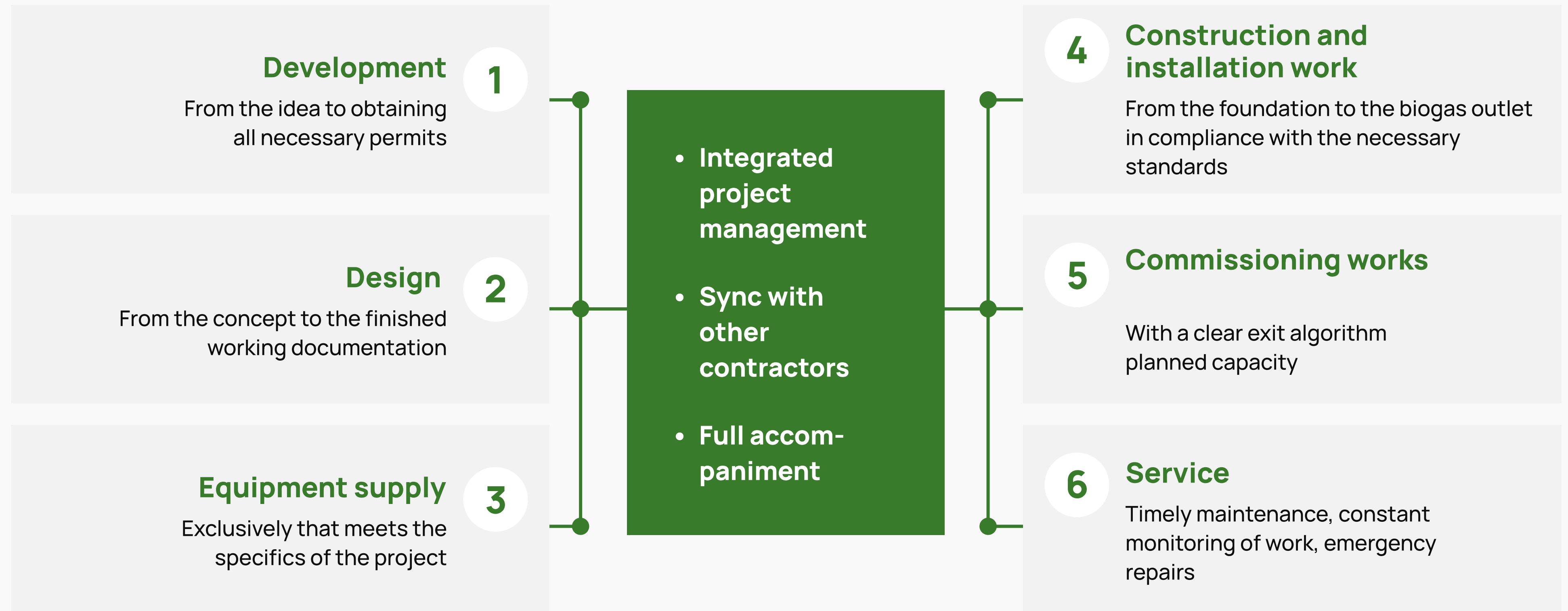
Your experienced partner
in bioenergy projects



Content

Pro-Energy turnkey biogas/biomethane plant	3
What benefits does the station provide to the owner?	4-5
How a biogas plant works	6-7
How a biomethane plant works	8
Equipment for biogas and biomethane production	9
How we work	10-11
Pro-Energy projects	12-16
Inside Pro-Energy: performance in numbers	17
Team	18-19
What form of cooperation in the field of biogas/biomethane can be chosen?	20
Contacts	24

Biogas/biomethane plant "turnkey" from Pro-Energy



What are the benefits of a biogas plant for the owner?



Ecological disposal of various wastes

- ✓ poultry farming;
- ✓ sugar production;
- ✓ crop production;
- ✓ livestock farming;
- ✓ alcohol production;
- ✓ bioethanol, etc.



The prospect of becoming a player in the EU energy market

By 2030, the EU intends to produce **35 billion cubic meters of biomethane per year**. About 20% of this amount is planned to be imported from Ukraine, meaning that companies that already have or will soon build biomethane plants will receive stable foreign exchange revenue and profitability at the IRR level of 22-35%.



The impeccable reputation of a conscious and sustainable company

Biogas plants are globally recognized and **benefit local communities, and are a highly profitable business diversification option for agricultural companies**. This is important for the long-term viability of the company.

What are the benefits of a biogas plant for the owner?



Energy independence

With a biogas plant, you can count on:

- ✓ stable energy availability regardless of external suppliers;
- ✓ the ability to work in conditions of blackouts and restrictions on electricity consumption;
- ✓ lack of dependence on currency exchange rate fluctuations and energy prices.



Cost optimization and higher competitiveness

It is necessary to prepare for the deepening of the harmonization of European and Ukrainian waste management standards and the introduction of carbon taxes already. The presence of a biogas plant will **reduce operating costs, taxes, diversify agricultural business, and increase its profitability and competitiveness in global markets.**

How a biogas plant works

Raw materials for the station can be:

- Cow manure
- Pig manure
- Chicken manure
- Corn silage
- Distillery stillage
- Beet pulp and waste

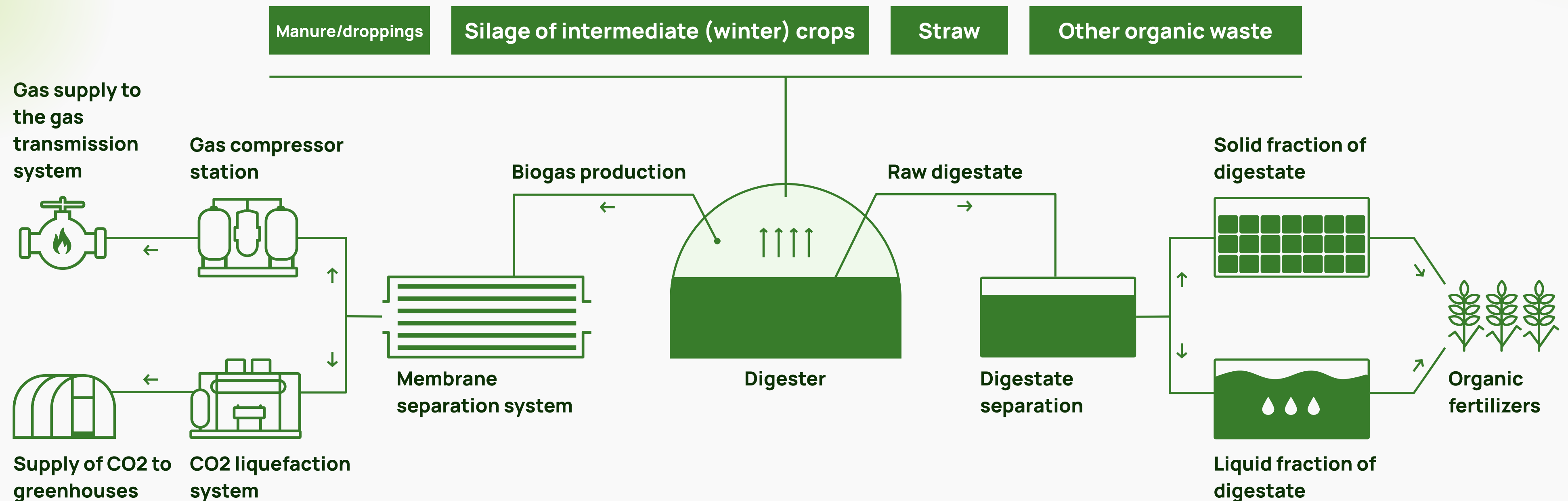
- Slaughterhouse waste
- Fat wastes
- Grass, straw
- Expired products
- Grain
- Vegetable waste

- Beer grains
- Organic part of solid waste
- Sorghum, amaranth
- Milk whey
- Sewage sludge
- ... and other

Biogas plant

– the first step in the process of transforming waste into income

Biomass:



Equipment for biogas and biomethane production

Netherlands

1991



HOST
BIOENERGY SYSTEMS

Biogas plants, hot water/steam boilers and CHP plants using biomass and RDF

Netherlands

1991



BRIGHT

Biomethane, compression (bio-CNG) and liquefaction of biomethane (bio-LNG), carbon capture technologies (CO₂ liquefaction)

How we work

The Pro-Energy team is focused on real partnership relations with customers.



Getting to know the idea of the project and deep immersion in its specifics

It is important for us to know the smallest details about the location of the enterprise, production features, and client expectations.



Conducting analysis, calculations and finding the optimal package of solutions

We have contracts with equipment and technology suppliers for various needs. Therefore, we always offer the best solution for a specific project.



We take into account the specifics of work in Ukraine

Our clients receive stations that are fully adapted to work in Ukrainian conditions. They operate at full capacity 90-100% of the time. The average rate of other stations is no more than 80%.



We share our experience

Over the years of work, we have clearly understood the prospects of a particular project, which is why financial institutions periodically turn to us for advice for their clients.

How we work

01. We stay with the client after launch under any circumstances

02. Standard guarantees* for equipment – 12 or 18 months



** 12 months from the date of plant start-up, but no more than 18 months from the date of equipment shipment.*

03. Pandemic, full-scale war and other unforeseen situations will in no way prevent us from performing warranty service:

- ✓ our team is located in Ukraine;
- ✓ equipment manufacturers are able to send all the necessary details and provide consulting support.



Pro-Energy projects

Biogas plant

Biogas plant with a capacity of 3.12 MW*e

Customer:

"Calypso Biogas" LLC

Financing:

Raiffeisen

Partner:

HoSt Biogas B.V.

Launch year:

2022

Location:

Chernihiv
region



Pro-Energy projects

Газова когенерація

Біогазові КГУ 2x1.56 МВт*е

Customer:

"Calypso Biogas" LLC

Financing:

Raiffeisen

Partner:

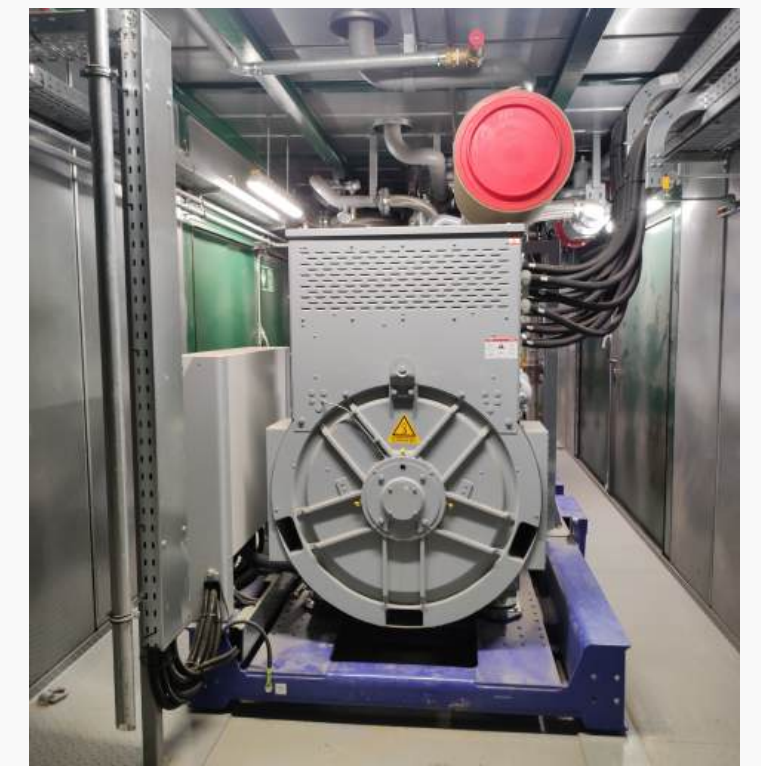
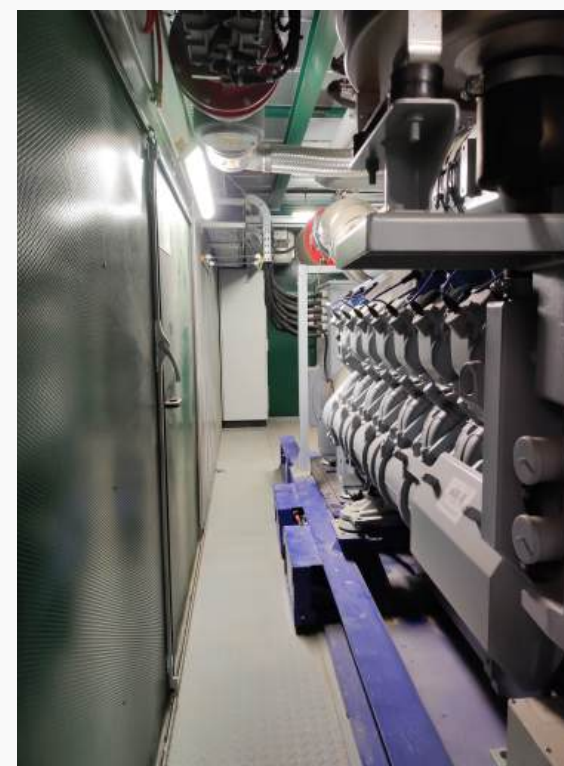
2G Energy AG

Launch year:

2022

Location:

Chernihiv
region



Pro-Energy projects

Biomethane plant in the village Elizavetivka

Upgrading of biogas to biomethane quality with a capacity of 2500 Nm3/h of biogas

Customer:

“Oril-Leader” PJSC

Financing:

NDA

Partner:

Bright Renewables B.V.

Launch year:

2025

Location:

Ukraine



Pro-Energy projects

Biomethane plant in the village Lynovytsia

Upgrading of biogas to biomethane quality with a capacity of 650 Nm³/h of biogas

Customer:

"Horodishche-Pustorivska Agrarian Company" LLC

Financing:

NDA

Partner:

Bright Renewables B.V.

Launch year:

2023

Location:

Chernihiv region



Pro-Energy projects

Biomethane plant in the village Dobrogoshcha

Upgrading of biogas to biomethane quality with a capacity of 750 Nm³/h of biogas

Customer:

ТОВ «ВІТАГРО
ЕНЕРДЖІ»

Financing:

NDA

Partner:

Bright Renewables B.V.

Launch year:

2023

Location:

Khmelnytskyi
region



Pro-Energy projects

Biomethane plant in the village Psychky

Upgrading of biogas to biomethane quality with a capacity of 750 Nm³/h of biogas

Customer:

"Horodishche-Pustorivska Agrarian Company" LLC

Financing:

NDA

Partner:

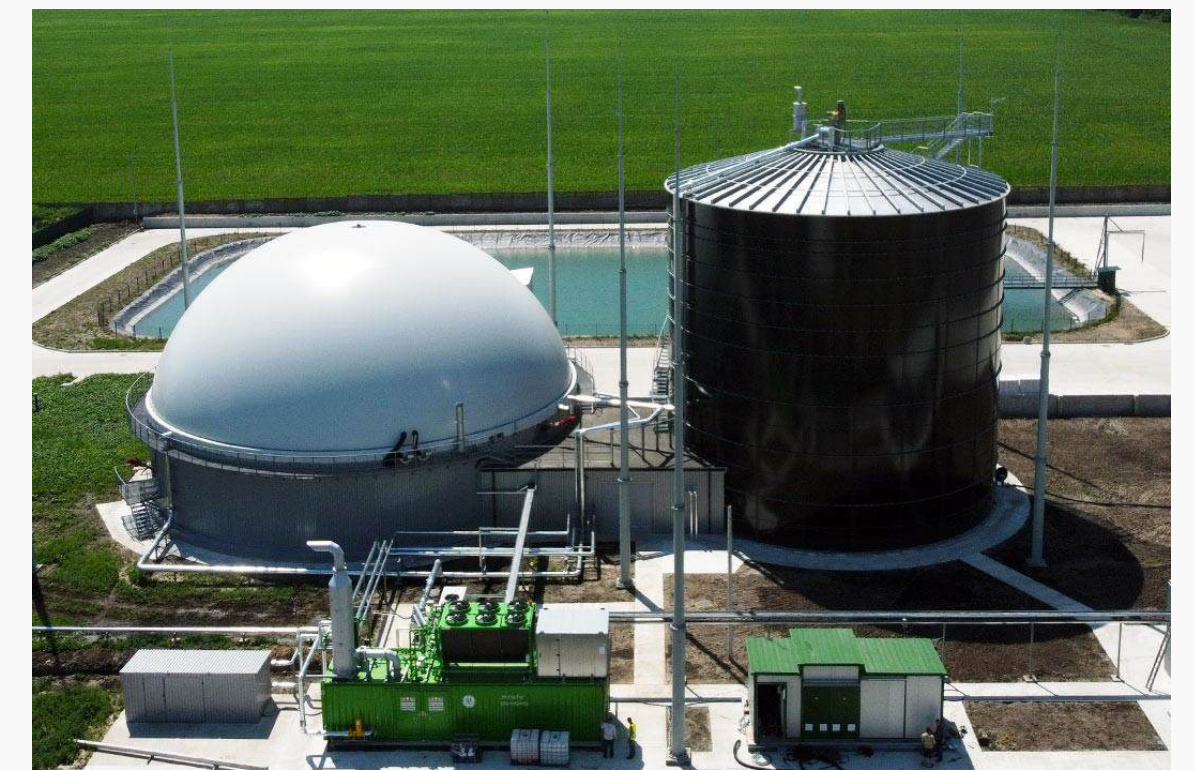
Bright Renewables B.V.

Launch year:

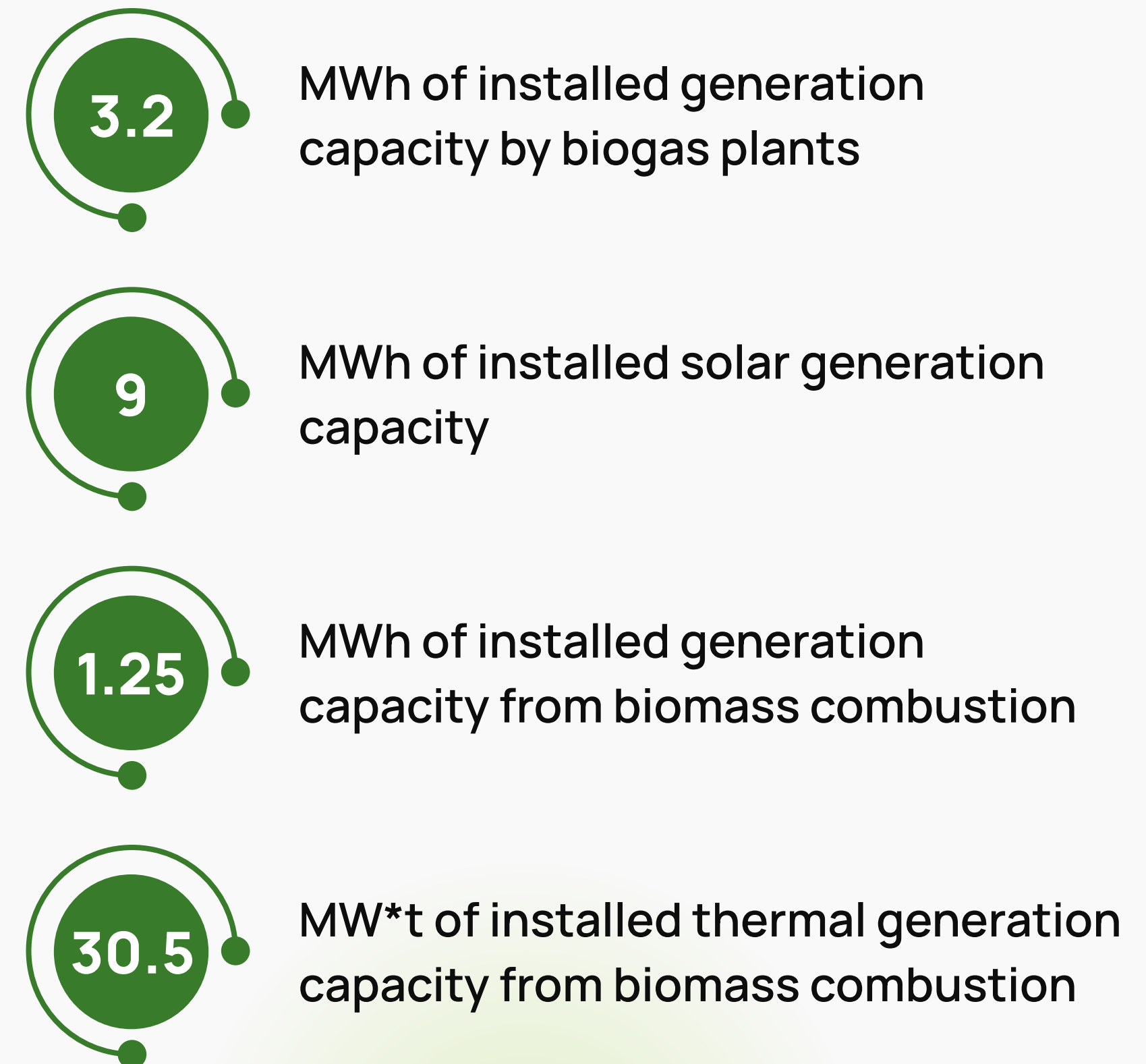
2024

Location:

Kyiv region



Inside Pro-Energy: performance in numbers



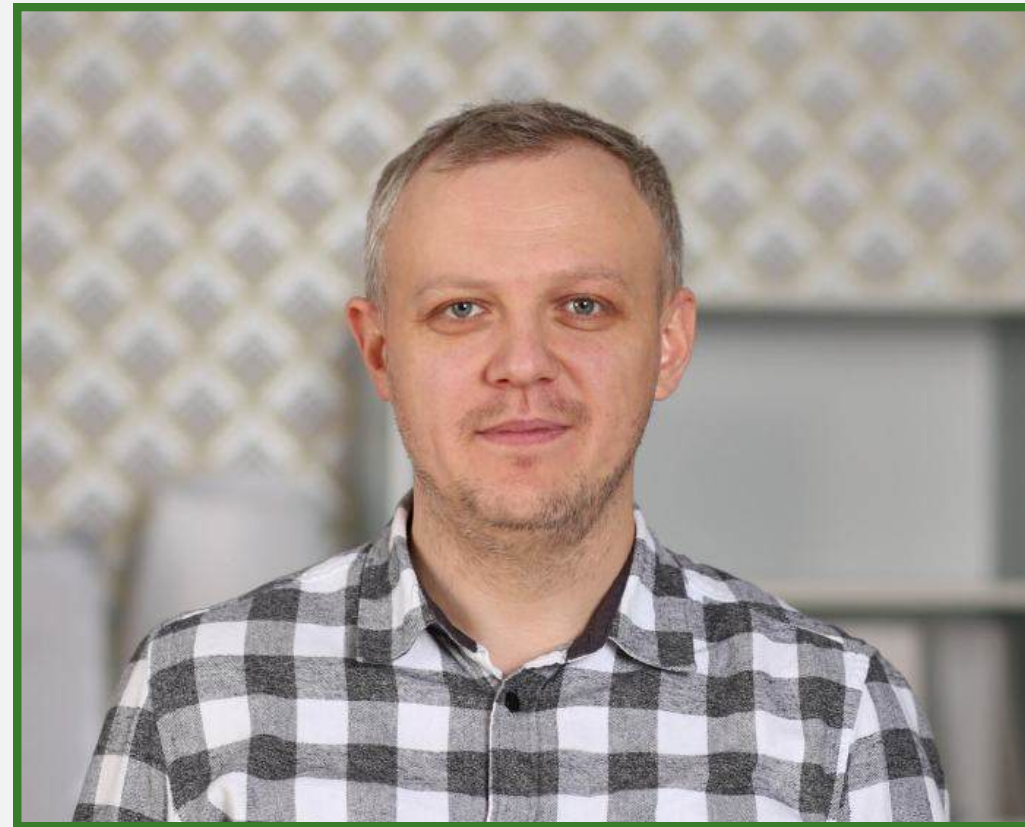
Team



Ruslan Delidon

Director and Managing Partner

- ✓ 15+ years experience;
- ✓ Ph.D. in Physical and Mathematical Sciences;
- ✓ Responsible for daily operational activities.



Volodymyr Kononchuk

Deputy Director and Project Manager

- ✓ 10+ years experience;
- ✓ Master of Thermal Power Engineering;
- ✓ Responsible for the implementation of the company's projects.



Roman Kondratyuk

Head of Service Department

- ✓ 10+ years experience;
- ✓ Master of Thermal Power Engineering;
- ✓ Responsible for warranty and post-warranty service.

Team



Malvina Kozlovets

Leading Biogas/Biomethane Process Engineer

- ✓ 8+ years experience;
- ✓ PhD in Biotechnology;
- ✓ Responsible for performing technological calculations.



Oleg Yovzhenko

Head of the sales department and biogas/biomethane technologist

- ✓ 10+ years experience;
- ✓ Master of Administrative Management;
- ✓ Responsible for communicating with customers and building processes.

What form of cooperation in the field of biogas/biomethane can be chosen?

Format	Source of profit	Biomethane implementation schemes
You build a station for yourself	You get profit from the sale of electricity from biogas / biomethane	On the domestic market under supply contracts between a producer of electricity from biogas or biomethane and another economic entity
You build the station in cooperation with an investor		Export of biomethane to EU countries under a long-term contract with leading European off-takers
You act as a supplier of raw materials	You get profit only from the sale of raw materials	Physical export at contract price, incl. export of liquefied biomethane (bioLNG) and biomethane fed through the gas station

Current concept options

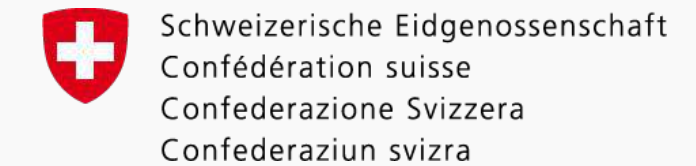
	1	2	3
Biomethane, EUR/MWh	100	75	75
Electricity, Euro cents per 1 kW	12	12	17
Heat	free		

1. Production of premium biomethane + production of electricity and heat for own needs

2. Biomethane production (up to 40% of the raw material can be silage) + electricity and heat production for own needs

3. Biomethane production + electricity (sale during peak hours)

Pro-Energy's experience with financial institutions



Pro-Energy's strategic partners



Contact us for more information.



Kyiv, Velyka
Vasylkivska St. 24/1



+380 (44) 227 7119
+380 (44) 492 7075



<https://www.pro-energy.com.ua>



info@pro-energy.com.ua

